

How to - Launch a Custom Inquiry Program

There may be times when launching the standard Barista Inquiry for a validated field on a form doesn't provide the functionality you need in your application. Figure 1 shows an Option Entry form that is launched by clicking the magnifying glass or typing ctrl-F from the Item ID field in AddonSoftware Purchase Orders. This form serves as a customized inquiry that allows the user to search for items by ID, Product Type, Synonym, etc., and see stocked quantities for the item highlighted in the grid. This provides a much more useful way to select an item than the standard inquiry against the Item Master table.

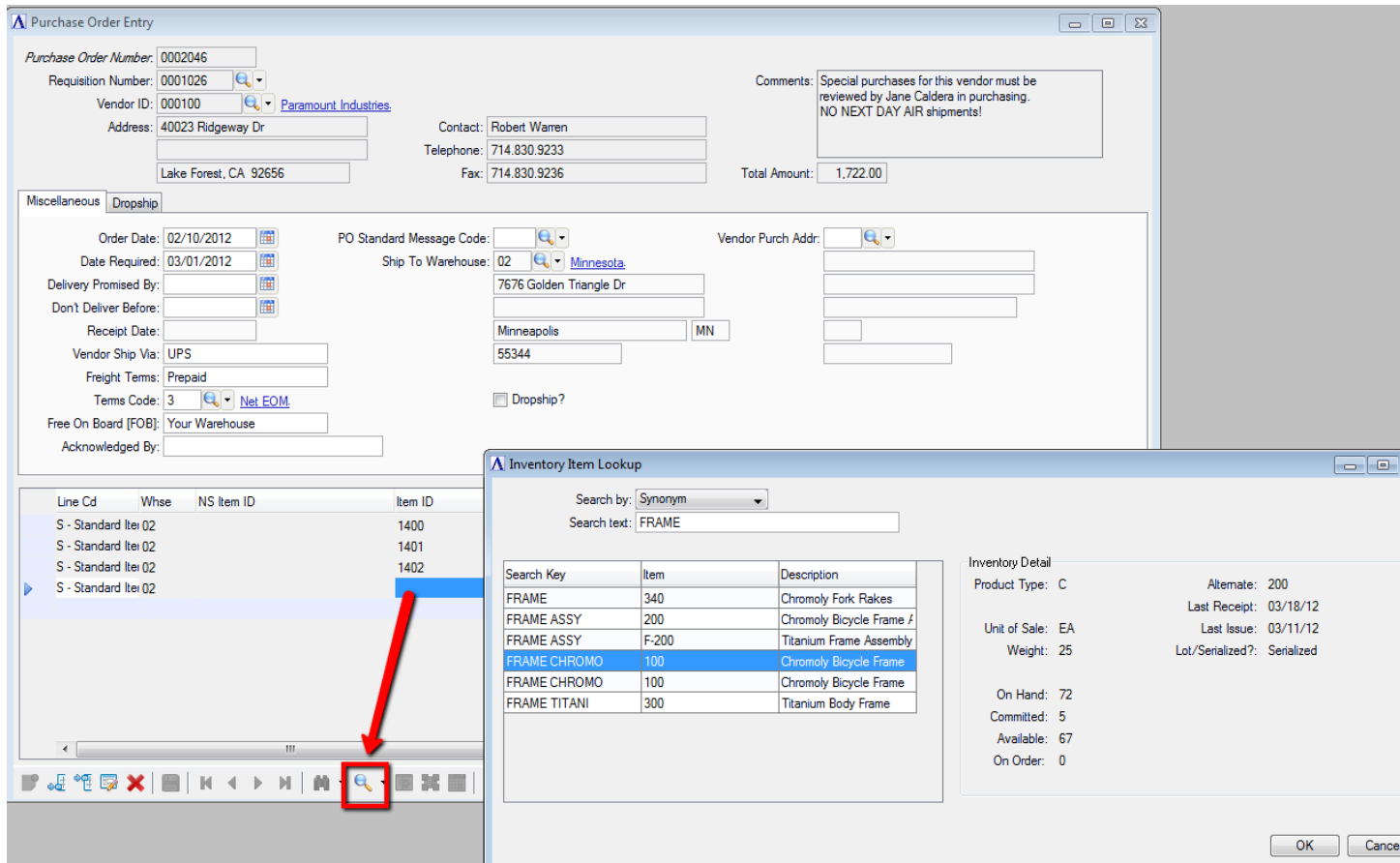


Figure 1: Customized Inquiry form launched for Item ID field

To enable a custom inquiry, first build the functional form. Next, create a program that Barista will call in order to run your form (Figure 2). Finally, on the Element Type for the field that should launch the inquiry, specify the program name (Figure 3).

```

rem --- custom inquiry link to Item Lookup
rem --- Program ivc_itemlookup
rem --- AddonSoftware
rem --- Copyright BASIS International Ltd. All Rights Reserved.

use ::ado_util.src::util

enter Form!,inq_table$,column_id$,table_chans${all},select_key$

rem --- Save current context so we'll know where to return
grid! = util.getGrid(Form!)
grid_ctx=grid!.getContextID()

select_key$=""
call stbl("+DIR_SYP")+bam_run_prog.bbj", "IVC_ITEMLOOKUP", stbl("+USER_ID"), "MNT", "", table_chans${all}
select_key$=str(bbjapi().getObjectTable().get("find_item"))
if select_key$="null" then select_key$=""

rem --- Return focus to where we were
sysgui!.setContext(grid_ctx,err=*next)

exit

```

Figure 2: Inquiry program used by Barista to call custom form.

Element Types

Element Type ID: ITEM_ID_INPUT Creation Date: 03/20/2009
Description: Inventory Item ID Input Revision Date: 09/25/2009

Definition Validation

Check Box Data:

Table Based

Validate Data Table: Inventory Item Master
Data Column: Data Table
Data Key:
Data Key Name:
 Use auto complete during entry

Inquiry Program:

Query ID:

Additional

Minimum Length: Data Expand Code:
Maximum Length: Data Compress Code:

Minimum Value: Precision:
Maximum Value: System Dialog:

Figure 3: Specify the name of the Inquiry Program in the Element Type Validation tab.