

Barista Document Open and Launch Processes

Barista Inquiry, Document Inquiry, and Queries all provide the ability to print the contents of the inquiry grid, or export the grid contents and launch the appropriate application viewer. Available export types include csv, txt, pdf, xls, and xml. The print option passes the grid contents to DocOut, which also has export and optional launch capability via the Output Selections form. In addition, when in the Document Inquiry grid, any previously saved document can be re-opened.

These open and launch processes take advantage of the jetty web server that is built into BBj. Each document that is opened or exported is copied to a documents sub-directory in the web server file structure, and can then be served to the user via BBj's `getThinClient.browse()` method. In this way, documents can be accessed from a client, even though they physically reside on a server. When the user exits the Inquiry or DocOut process, Barista cleans up the sub-directory in the web server file system, removing all of the temporary file copies from that session.

The file copying and removal is done via the `BBUtils` class, using the `isWebServerSSLEnabled()`, `copyFileToWebServer()` and `deleteFromWebServer()` methods. The `isWebServerSSLEnabled()` method returns the value of the SSL Enabled checkbox from the Web Server settings in Enterprise Manager. The `copyFileToWebServer()` method takes the name of the file to copy, the name of the Barista destination sub-directory, and the SSL setting. Files copied to the web server are stored in a vector in the group namespace. When the DocOut or Inquiry process terminates, the vector is parsed and files removed using the `deleteFromWebServer()` method. For version 11.10, the `BBUtils` class resides in `<bbj_home>/demos/Common/`, so this path needs to be added to the `barista.cfg` prefix setting. In the mainline version of BBj (currently 11.11), `BBUtils` is located in `<bbj_home>/utils/`, and that pathname has been added to `barista.cfg` prefix.

DocOut

In addition to saving/archiving DocOut reports in the usual fashion, the Output Selections form lets you save documents in any of several formats, and optionally launch them. Figure 1 shows the Barista Languages table in the DocOut viewer. The Output Selections form has been launched, and we've selected both **pdf** and **txt** output in the **Disk** column. In addition, we've selected the **Launch** option for the txt file. DocOut creates both files on disk, and then copies the txt file to a location where jetty can launch it (Figure 2). When you exit DocOut, Barista removes the txt file that it copied to the web server directory, but leaves the original txt file in place, so it can be re-opened later via Document Inquiry, if desired.

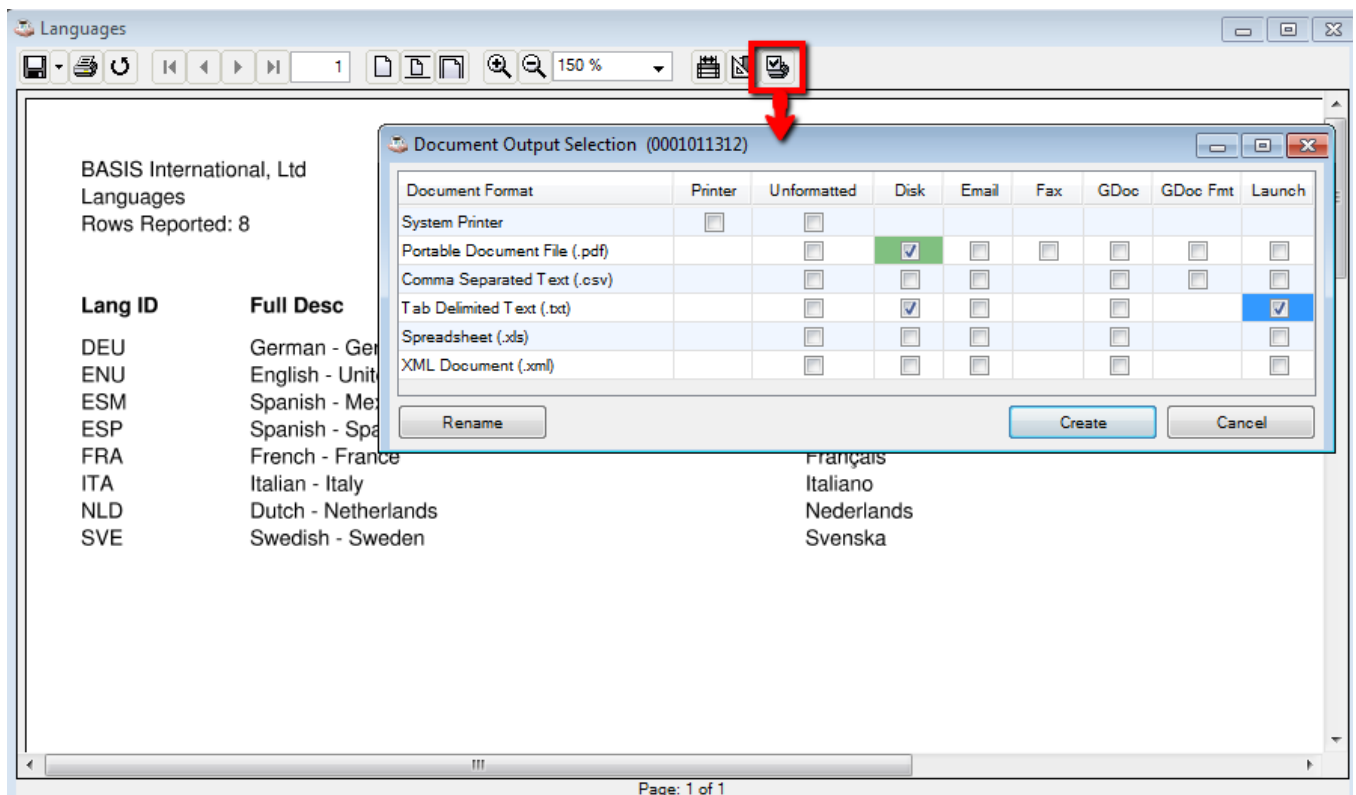
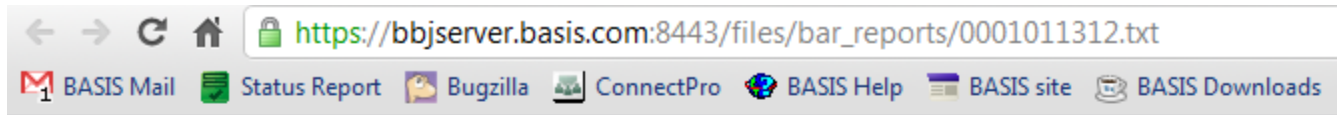


Figure 1: Barista Output Selection form from DocOut. Green shaded cell is the default setting. Checkmarks show additional output selections.



| Lang ID | Full Desc | Short Desc | Locale ID | Act? |
|---------|-------------------------|------------|-----------|------|
| DEU | German - Germany | Deutsch | de_DE | * |
| ENU | English - United States | English | en_US | * |
| ESM | Spanish - Mexico | Español | es_MX | |
| ESP | Spanish - Spain | Español | es_ES | * |
| FRA | French - France | Français | fr_FR | * |
| ITA | Italian - Italy | Italiano | it_IT | * |
| NLD | Dutch - Netherlands | Nederlands | nl_NL | * |
| SVE | Swedish - Sweden | Svenska | sv_SE | * |

Figure 2: Requested txt document has been saved to disk, and is launched via jetty web server.

Document Inquiry

The Barista Document Inquiry table contains records for every document/output type combination that you've elected to archive. The default settings are shown in figure 3, indicating that the DocOut viewer will be displayed, documents will be saved as pdf when the user clicks the save icon in DocOut, and all view/output operations will be archived into the Document Inquiry table. Document-specific settings, if they exist, will override these defaults.

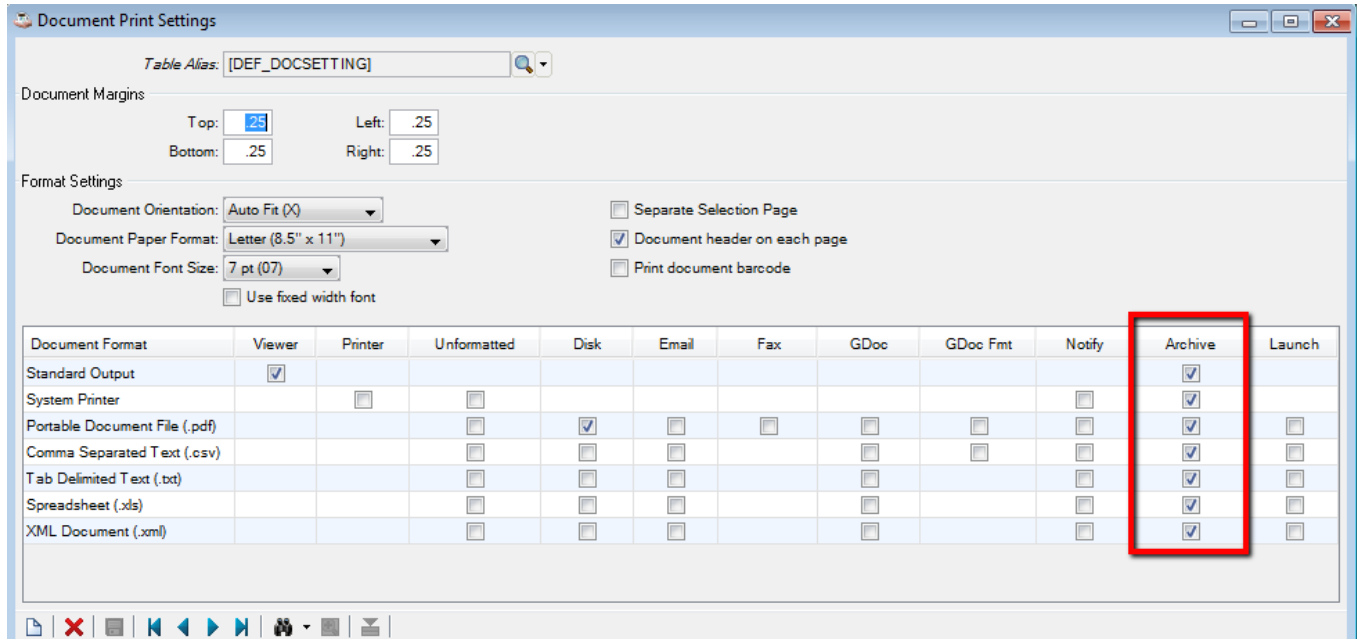


Figure 3: Default Document Print settings, showing that all output types are archived to the Document Inquiry table.

Document Inquiry is a custom version of a regular Barista Inquiry grid. If you right click or click the Additional Options menu, you can elect to **Print** the contents of the inquiry grid to DocOut, or **Export records** from the grid. Understand that the print and export functions are processing the *rows in the grid*, not the documents to which they refer. To view any previously saved document, use the **Open Document** option as shown in figure 4.

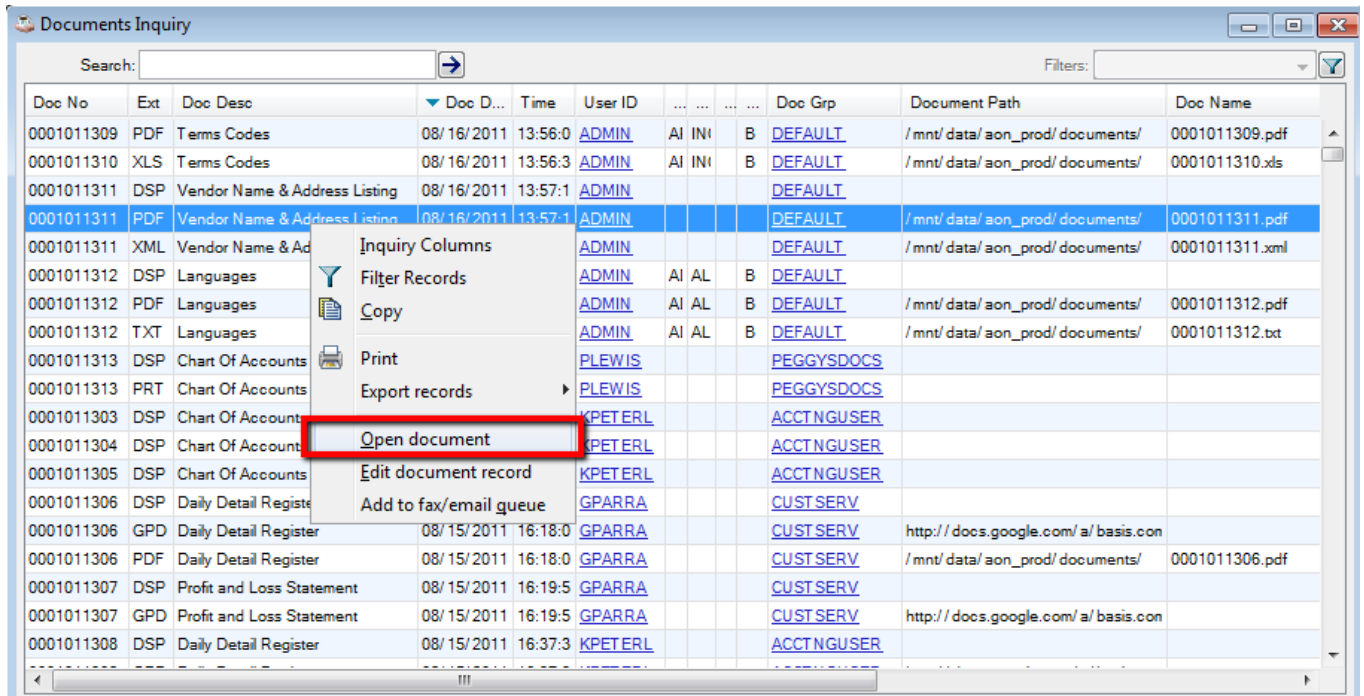


Figure 4: Document Inquiry allows you to re-open a previously saved document.

As described earlier, Barista copies the requested document to a sub-directory where it can be served up by jetty, and removes the copy when you close Document Inquiry.

Depending on your browser settings, some document types will launch automatically in your browser, and others may download (and may additionally prompt you for a download location) to a local folder from which you can launch them. You can configure your browser to automatically open files such as xls or csv, saving you the subsequent launch step (figure 5). These files will then be opened in the application associated with the file extension, such as Microsoft Excel or OpenOffice Calc.

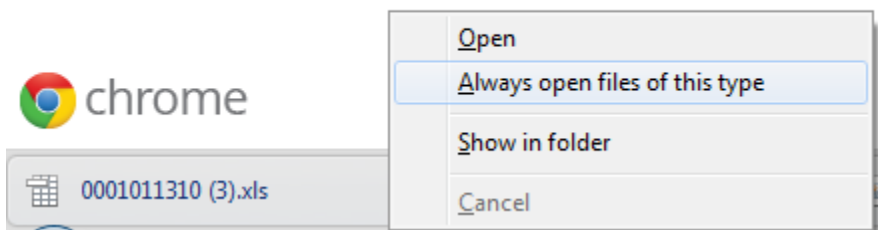


Figure 5: Browser showing downloaded file in Chrome. Click to launch, or click the menu button, where you can opt to open this type of file automatically from now on.

Inquiry and Queries

Any standard Barista Inquiry grid or custom Query provides the ability to **Print** the grid contents via DocOut, or **Export records** from the grid and launch the resulting file. Right-click in the grid or use the Additional Options menu to select the **Print** or **Export records** functions (figures 6 and 7).

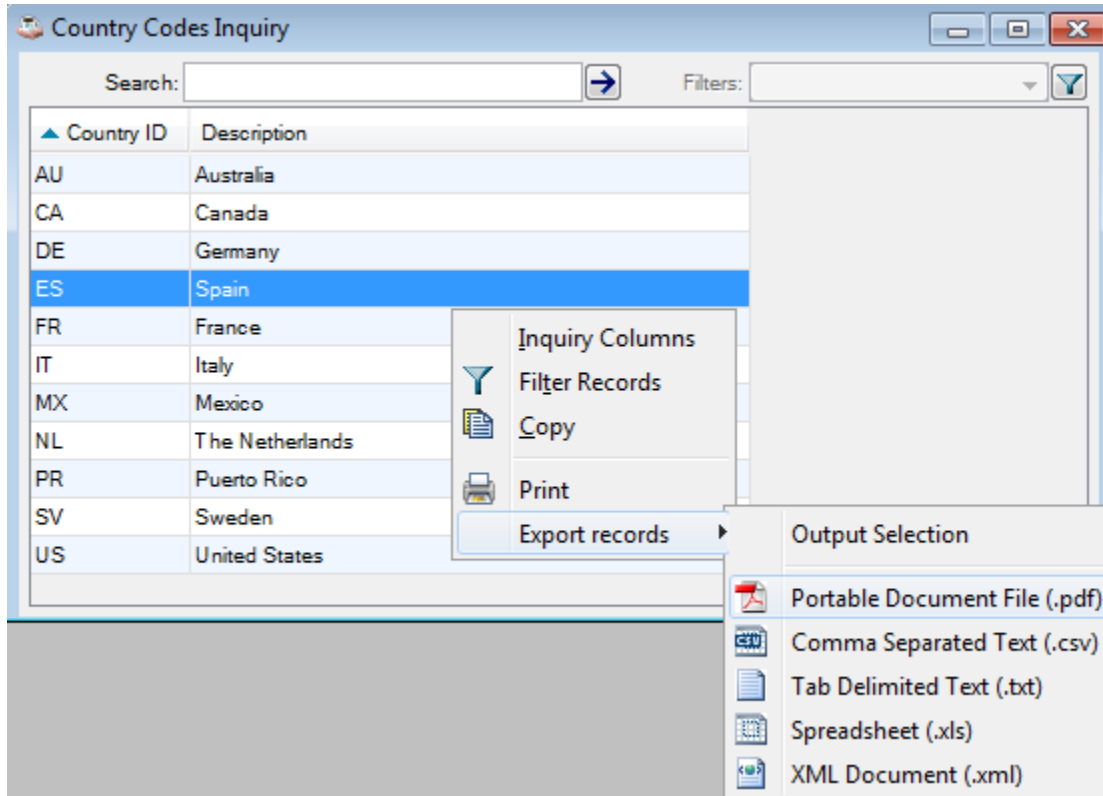


Figure 6: Right-click in the grid to Print grid contents via DocOut, or Export and launch in selected format.

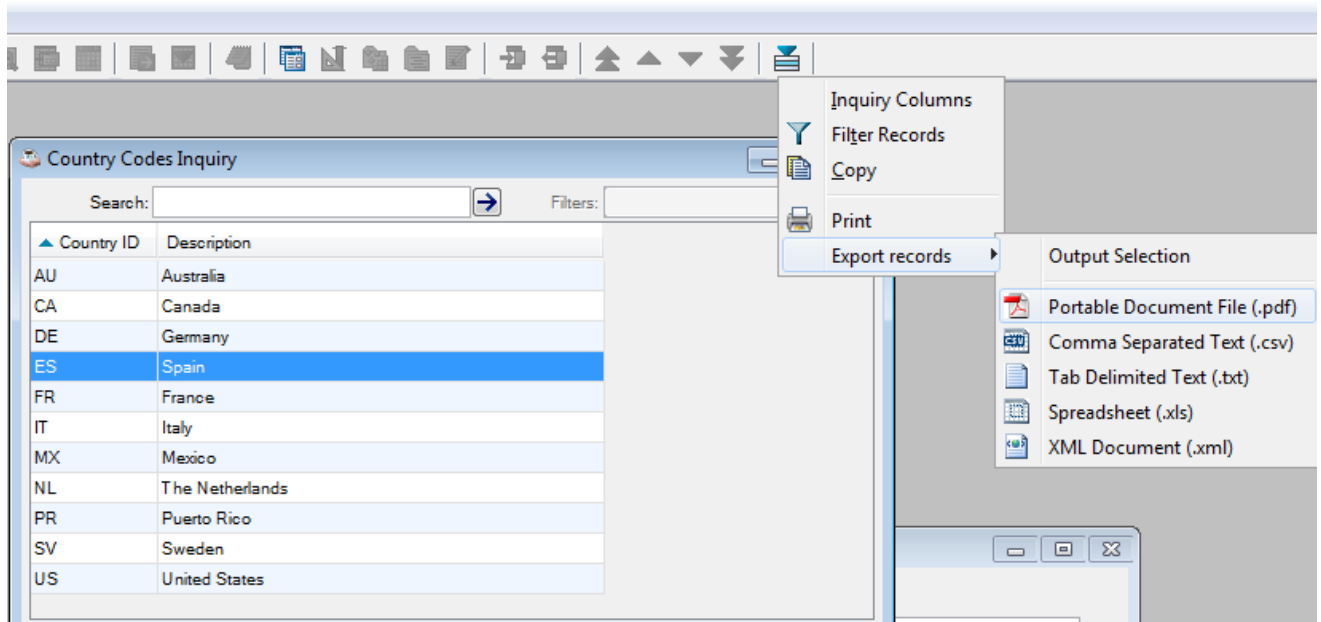


Figure 7: Accessing the Print and Export functions from the Additional Options menu.

If you opt to **Print**, the grid contents are displayed in DocOut, and you can then save or export using the DocOut Output Selections as described above. If you chose the **Export records** option, Barista exports the grid contents in the specified format and copies the file to the web server sub-directory for launching. The web server copy of the document is removed when you exit Inquiry, but the export copy can be accessed subsequently via Document Inquiry. In figure 8, the contents of the Barista Countries inquiry has been exported as a pdf. Figure 9 shows the archive entry in Document Inquiry, from where the document can be re-opened.

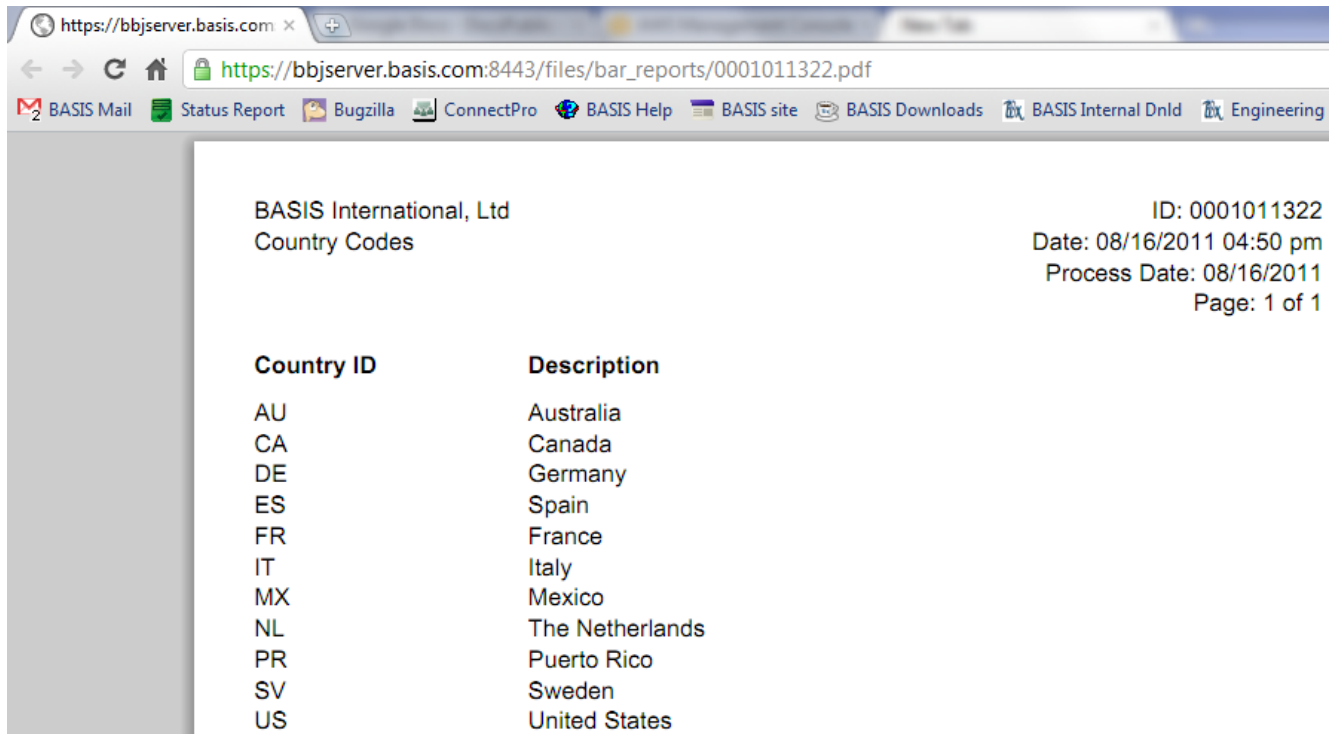


Figure 8: Country Codes table exported and launched as pdf document from within Barista Inquiry.

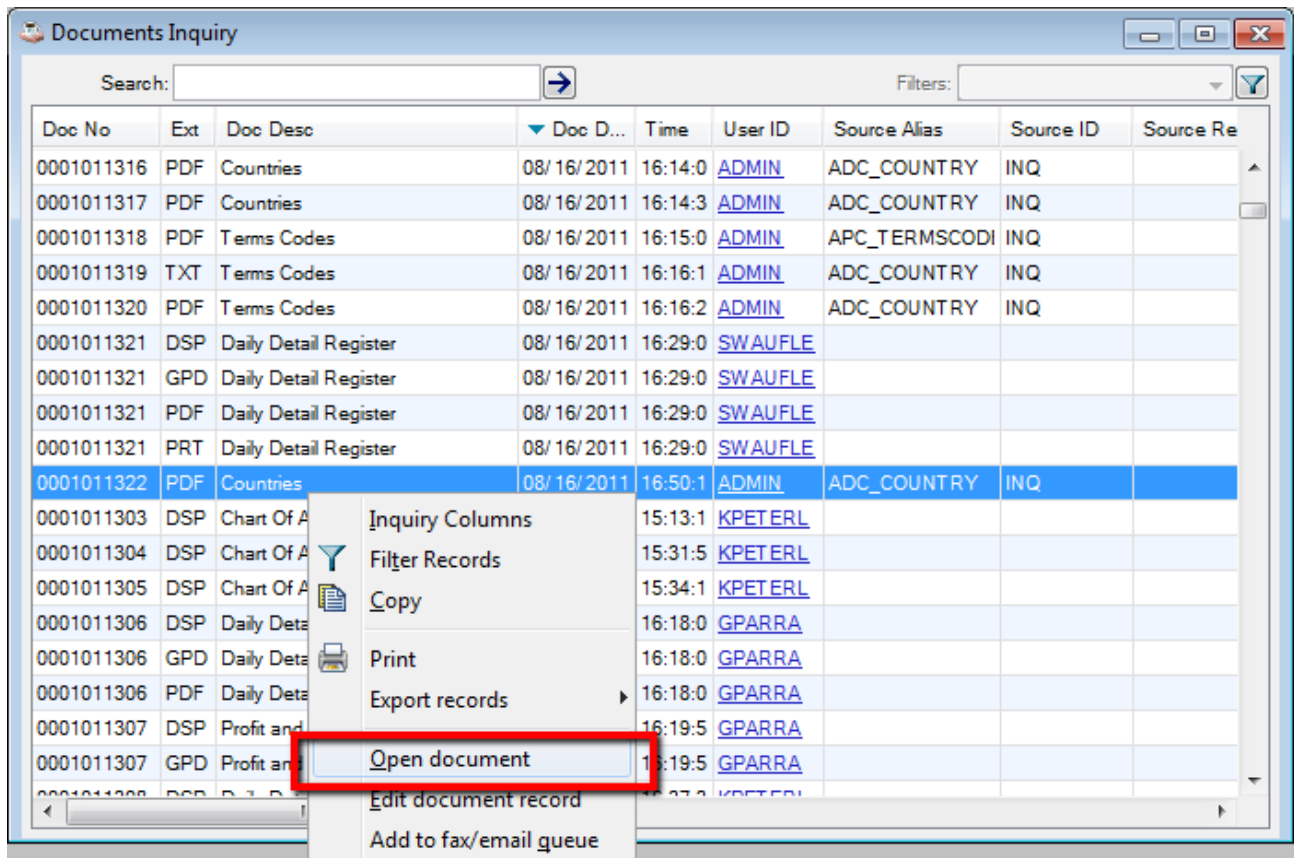


Figure 9: Exported pdf is saved on disk and recorded in Document Inquiry, where it can be re-opened later.

All of these processes use a sub-directory called **bar_reports** within the jetty web server file structure (under htdocs). If, for some reason, a DocOut or Inquiry/Query session is interrupted, leaving orphaned file copies in bar_reports, the directory can be manually cleared, since these are all temporary files.