

# Getting to Know More About the BBj

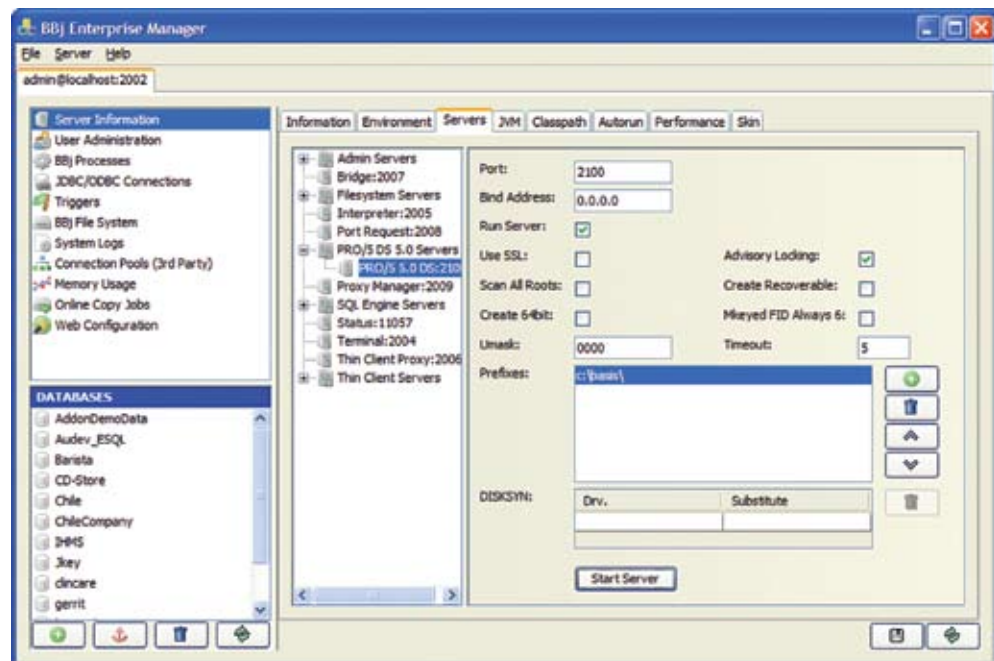
Even though the BBj® PRO/5 5.0 Data Server® (BBj P5 DS) has been part of the BBj product since nearly the beginning, we still often receive questions in Tech Support about how to use the BBj PRO/5 DS. It is a database management component that enables PRO/5® or Visual PRO/5® clients to access the BBj-based BASIS DBMS and all its features. It's a very viable component to the BBj solution that you may not have considered. Read on to discover more about how this might fit into your configuration.

**Q.** *What is the difference between the BBj PRO/5 DS and the PRO/5 5.0 Data Server? Why would I use one over the other?*

**A.** The main difference is whose control the data is under, PRO/5 or BBj. The PRO/5 (P5) Data Server is a standalone product that controls PRO/5 data access that serves data to (V)PRO/5 or BBj clients, while the BBj P5 DS is one of the BBj Services DBMS components that permits access to the BASIS DBMS from (V)PRO/5 clients. One performance advantage to using the BBj Services DBMS with BBj P5 DS for file access from PRO/5 clients is that less stress is placed on the operating system resources on large user networks compared to the PRO/5 5.0 Data Server. This is especially true when the server is a Windows machine. It also enables Triggers, Stored Procedures, and access to additional BASIS file types. For a more in depth look at the two products and determining which one is best for your configuration, read [Lock, Lock, Who's Got The Lock? Is it Visual PRO/5, PRO/5, PRO/5 Data Server, or BBj?](#)

**Q.** *How do I install the BBj P5 DS?*

**A.** The BBj P5 DS installs automatically when installing the standard default components of BBj. You can configure it in Enterprise Manager under the Servers Tab as published in the online documentation for [Enterprise Manager - Server Information](#).



**Figure 1.** Configuring the BBj P5 DS in Enterprise Manager



**By Janet Smith**  
Technical Support  
Supervisor

# PRO/5 5.0 Data Server

**Q.** *Where is the config.bbx file located that the BBj P5 DS uses?*

**A.** Actually, the BBj P5 DS does not use a config.bbx file. Instead, set the configuration settings and information pertaining to the BBj P5 DS in Enterprise Manager as shown in **Figure 1**.

**Q.** *How do I access files via the BBj P5 DS?*

**A.** To enable data server access in the interpreter, set the setopts bit byte 4 to \$20\$: `setopts $00000020$`

The code syntax for accessing files is the same for both BBj P5 DS and standalone PRO/5 DS except for the port specified: `open(1)"/<server,port=2100>\path\filename"`.

By default, the standalone P5 DS uses port 1100 and BBj P5 DS uses port 2100, but you can change the BBj P5 DS port in the Enterprise Manager. The same network troubleshooting tips regarding hostname resolution and .rhosts user authentication apply to both products. For more information, read knowledge base articles KB 964 [TCP/IP Hostname Resolution and the BASIS License Manager \(BLM\)](#) and KB589 [TCB\(10\)--10061 or RUSEROK Failure in Data Server Log](#).

**Q.** *Why am I getting an !ERROR=69 "User count or validation error" when I try to access the BBj P5 DS?*

**A.** This error occurs when you are attempting to access the BBj P5 DS from a BBj client. The BBj P5 DS is intended for use by (V)PRO/5 clients only as explained in KB1095 [ERROR=69 Returned When BBj PRO5 Data Server Accessed Incorrectly](#). It can also occur if you do not have an Enterprise License feature in your BBx product license as explained in the Advantage article [BBj: One License, One Install](#). ■