

Enterprise Manager Admin Only “Safe” Mode

The BBj® Enterprise Manager (EM) has long been an essential tool for managing BBj deployments. From this one application it is possible to simultaneously connect to local and any number of remote servers, manage users and databases, change server ports, manage the built-in Jetty Web Server, deploy Web Start applications, and deploy BUI applications. The list is long and growing longer as BASIS adds new features to each release of BBj. You can do just about everything from EM.

Q. *When my server is live with active users, and if I want to add a table to a database, change a trigger, start a replication job, how do I gain exclusive access so that I can make these changes safely?*

A. It really would be best to have the system to yourself for these types of changes. In the past, developers have taken drastic steps to ensure server configuration changes did not affect (or were not affected by) active users. They manually edited the BBj.properties file, they [quiesced](http://en.wikipedia.org/wiki/Quiesced) the server by manually disabling certain ports, they watched BBj Processes module in EM for errant users from, for example, the Sales Department. ☺

With BBj 11.0, you can have the EM all to yourself with the new Admin Only Mode. Admin Only Mode allows you to restart BBj Services in such a way that only the Admin Server, port 2002, is running. This prevents users from running any programs or accessing any data files outside of EM or the Admin API. Once enabled, restarting BBj Services will start up in Admin Only Mode; a red background will be displayed in the Server Information window, reminding you that the server has been quiesced, as shown in **Figure 1**.

Now you can make your changes without worrying about complications that can arise in a live environment. Once you've committed your changes, simply restart BBj Services to bring it up normally with all of the servers running.

Q. *How do I enable Admin Only Mode?*

A. This useful feature, tucked away in the BBj 11.0 EM, is available in three locations:

1. From the EM Server menu, select Shutdown to Admin Only Mode. Clicking this menu item will shutdown BBj Services with Admin Only Mode Enabled, as shown in **Figure 2**.
2. From the Server Information navigator in EM, click the Servers tab. The [Enable Admin Only Mode] button appears at the top of the window. Clicking this button merely enables Admin Only Mode; it does not shut down BBj Services, as shown in **Figure 3**. >>

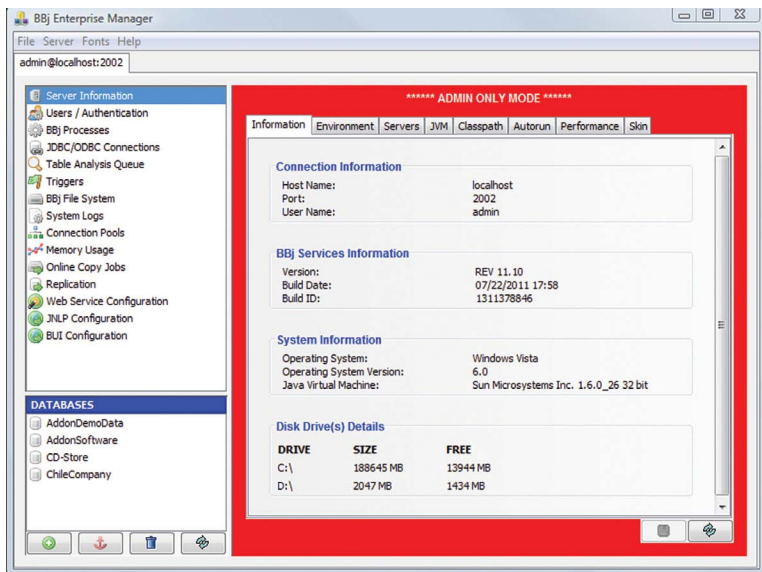


Figure 1. Enterprise Manager connected to a BBj Server running in Admin Mode

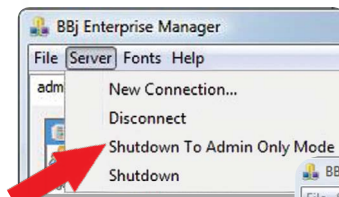


Figure 2. New Shutdown Mode

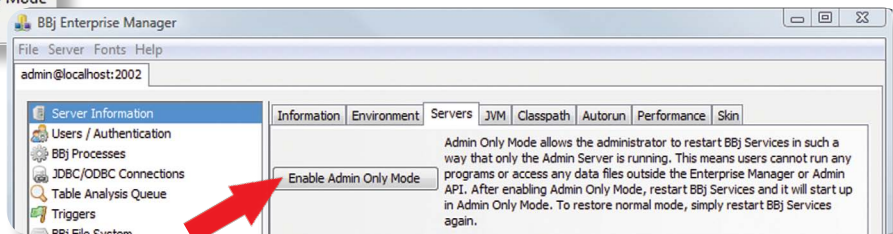


Figure 3. New Enable Admin Only Mode button



By Bruce Gardner
Technical Support
Supervisor

- The third place you'll find the Admin Only Mode is in EM's Replication Navigator. Once you start a replication job, you will have the opportunity to click the [Shutdown Server to Admin Only Mode] button, which is highly recommended for the initialization of replication jobs. As with the Server menu item, clicking this button will immediately shutdown BBJ Services with Admin Only Mode enabled, as shown in **Figure 4**.

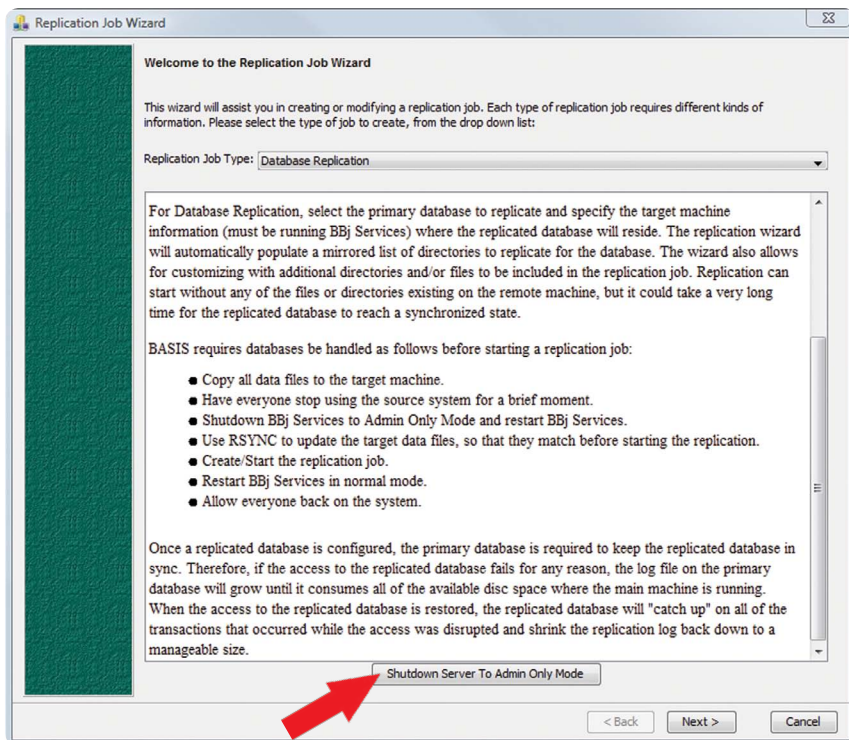


Figure 4. New [Shutdown Server To Admin Only Mode] button

Note: There's a fourth way to enable Admin Only Mode. If you want to be old-school about it, simply edit the BBJ.properties file and add this line:

```
com.basis.server.BBJServices.adminOnlyMode=true
```

Once you've restarted BBJ Services in Admin Only Mode, you will only be able to connect to the Admin port by running EM directly on the system console or by running EM on a remote machine and connecting to your quiesced server.

Now you're free to make the modifications you need, without worrying about some 'eager beaver' from the Sales Department sneaking in to do some work!

Summary

Admin Only Mode finally delivers the ability to use the intuitive interface of EM in a quiesced state without the worry of affecting live users or them affecting you. While this feature isn't one you would need often, when you need it, it's an extremely helpful maintenance tool. ■